

Yeast stress and death caused by the synergistic effect of ethanol and SO₂ during the second fermentation of sparkling wines

 Bruno Cisilotto^{*1,2}, Fernando Joel Scariot¹, Luisa Vivian Schwarz¹, Ronaldo Kauê Mattos Rocha¹, Ana Paula Longaray Delamare¹ and Sergio Echeverrigaray¹

¹ Laboratory of Enology and Applied Microbiology, Institute of Biotechnology, University of Caxias do Sul, Brazil

² Federal Institute of Education, Science and Technology of Rio Grande do Sul (IFRS), Campus Bento Gonçalves, Brazil

 *corresponding author: bruno.cisilotto@bento.ifrs.edu.br

 Associate editor: Patricia Taillandier

ABSTRACT

Problems can often arise at the beginning of the second fermentation (*prise de mousse*) of sparkling wines, such as no start, a long lag period or slow fermentation. These problems are generally associated with yeast stress when inoculated in a base wine with high ethanol content and low pH. However, few studies focus on sulphites, which are often added to base wines to prevent malolactic fermentation, microbiological instability, and wine oxidation. This study aimed to evaluate the joint effect of ethanol and sulfur dioxide on yeasts during the second fermentation. For this purpose, yeasts (*Saccharomyces cerevisiae* EC1118) were subjected to ethanol, sulfur dioxide and ethanol/sulfur dioxide at the beginning of fermentation, and their vitality and viability, as well as the accumulation of intracellular reactive oxygen species and intracellular pH, were evaluated by flow cytometry. Furthermore, the expression of genes involved in sulfur transport and metabolism was determined. The results showed high mortality, ROS accumulation and intracellular pH reduction in fermentations with both ethanol and sulfur dioxide. The negative effect of ethanol, sulfur dioxide and ethanol/sulfur dioxide on yeasts was found to be dose-dependent and high in those commonly found in some base wines. Cells treated with ethanol/sulfur dioxide showed over-expression of genes involved in sulphite transport (*SUL1* and *SUL2*), efflux pump (*SSU1* and *FZF1*) and metabolism of sulfur amino acids (*MET14*). Altogether, our data indicate that ethanol and sulfur dioxide have a synergistic effect on yeasts, which may be the root cause of the problems encountered at the beginning of the second fermentation of sparkling wines, and should thus be seriously taken into consideration by winemakers.

KEYWORDS

vitality, viability, ROS, intracellular pH, gene expression

INTRODUCTION

Sparkling wines develop over two consecutive fermentations: the first one converts grape must into base wine, and the second favours CO₂ incorporation (Di Gianvito *et al.*, 2019). The base wines are characterised by an alcohol content of 9.5 % - 11.5 % (v/v) and relatively higher acidity (compared to still wines), with a pH index of 2.8 - 3.3 (Togores, 2018). The second alcoholic fermentation or “*prise de mousse*” (literally “foam creation”), is carried out in closed vessels (hermetic tanks or bottles) causing the incorporation of carbon dioxide into the liquid (Carrascosa *et al.*, 2011). This second fermentation can be performed using either the traditional method (fermentation in the bottle) or the Charmat method (fermentation in a tank). For this purpose, together with the base wine, a mix (*liqueur de tirage*) is added with a specific amount of sugars per litre of wine (usually sucrose cane or beet sugar at 20 - 25 g/L) and yeast starter culture for the fermentation (Di Gianvito *et al.*, 2019).

The chemical composition of the base wine and the conditions of the second fermentation usually stressing factors for the yeast inoculum: for example, high ethanol concentration, presence of glycerol and low pH (Borrull *et al.*, 2015), presence of sulfur dioxide (SO₂) (Sudraud *et al.*, 1985), presence of acetic acid (Giannattasio *et al.*, 2013), relatively low fermentation temperatures and concentration of nutrients (Kemp *et al.*, 2020; Martí-Raga *et al.*, 2015), and presence of endogenous CO₂ (Porras-Agüera *et al.*, 2020). Therefore, the adaptation of the yeasts to the base wine is important for the success of the second fermentation (Benucci *et al.*, 2016; Borrull *et al.*, 2016; Martí-Raga *et al.*, 2015). This adaptation procedure is known as *pied-de-cuve* (in the French language) and consists of two important phases: adaptation to the alcoholic medium and active growing phase (Benucci *et al.*, 2016). This process can last for several hours or days, and usually with a gradually increasing concentration of ethanol and sugar (Benucci *et al.*, 2016; Borrull *et al.*, 2016; Martí-Raga *et al.*, 2016). Traditional yeast adaptation and inoculation protocols for the second fermentation recommend a final inoculum of approximately 1.5 x 10⁶ cells/mL of base wine (Ribéreau-Gayon *et al.*, 2006). According to these authors, it is possible for levels well below this to cause sluggish fermentations and leave unfermented sugars. Conversely, higher levels (above 2 x 10⁶ cells/mL) speed up fermentations;

however, depending on the strain, they can result in excessive yeast taste in the final product due to yeast autolysis.

Wine is a hydrolytic solution in which ethanol is the second most abundant compound (Waterhouse *et al.*, 2016) and an inhibitor for several microorganisms. In the conditions of the second fermentation of sparkling wines, ethanol is described as the main environmental factor to have an influence on yeast transcriptional responses (Penacho *et al.*, 2012). Among several factors tested in a study by, ethanol in the base wine was considered to be the main stress factor for yeasts in the second fermentation of sparkling wines. Tolerance to ethanol varies widely among yeast species (Lin *et al.*, 2020), and within the *Saccharomyces cerevisiae* species, tolerance may vary depending on the strain (Borrull *et al.*, 2015). The presence of ethanol can cause structural changes in yeasts cells, which can impact the fluidity of the plasmatic membrane (Navarro-Tapia *et al.*, 2018), and consequently cell morphology (Dinh *et al.*, 2008).

Another important compound pointed out as being a stress factor in base wines is SO₂, which is used as a preservative in these wines until the second alcoholic fermentation. Sulfur dioxide is added to grape musts and wines to reduce the medium (antioxidant activity) and to inhibit undesirable microorganisms (antimicrobial action) (Blouin and Peynaud, 2006; Gould and Russell, 2003). Although the use of SO₂ for the conservation of wines is an old practice (Gould and Russell, 2003), ingestion of sulphites through the consumption of food and drink can cause some related adverse clinical effects (Vally *et al.*, 2009) ; for this reason, there is a worldwide movement towards decreasing the concentration of sulphites in wines. Although several studies have shown alternatives for SO₂ and sought to reduce its use (Capece *et al.*, 2020; Christofi *et al.*, 2021; Marchante *et al.*, 2019; Shih *et al.*, 2020; Simonin *et al.*, 2020; Zara and Nardi, 2021), to date, no other physical technique or chemical additive can provide the efficacy and broad spectrum of action of this compound (Lisanti *et al.*, 2019).

The microbial inhibition by SO₂ in yeasts has been attributed to several cellular changes, such as the modification of membrane transport activity by binding to membrane proteins (Divol *et al.*, 2012); the inhibition of glyceraldehyde-3-phosphate dehydrogenase (GAPDH) - a critical enzyme in the glycolysis pathway (Hinze and Holzer, 1986) - and other enzymes like ATPase,

alcohol dehydrogenase and NAD-glutamate dehydrogenase (Maier *et al.*, 1986), causing a decrease of the ATP content in cells (Hinze and Holzer, 1986; Maier *et al.*, 1986; Schimz and Holzer, 1979); the modification of the expression of many genes correlated with cell metabolism (Park and Hwang, 2008); the degradation of available thiamine (Labuschagne and Divol, 2021); the binding of metabolites (acetaldehyde, pyruvate, glucose, dihydroxyacetone-phosphate, oxaloacetic acid, and α -ketoglutaric acid), thereby preventing their further use as substrates for metabolic pathways (Rankine and Pocock, 1969). However, wine yeasts, particularly *S. cerevisiae*, have a certain tolerance to SO_2 (García-Ríos and Guillamón, 2019) and this tolerance varies between strains (Nadai *et al.*, 2016). SO_2 tolerance is a desired trait in wine yeasts which has been unconsciously selected in wine-making practices over time (Zimmer *et al.*, 2014), and can be considered an evolutionary advantage (García-Ríos *et al.*, 2019).

To reduce the toxicity of sulfur dioxide, yeasts use several mechanisms, such as increasing the production of acetaldehyde to bond with SO_2 and thus reducing the free fraction (Cherai *et al.*, 2010; Park and Hwang, 2008); activating the Ssu1p sulphite pump encoded with the *SSU1* gene (Marullo *et al.*, 2020; Zara and Nardi, 2021); activating sulfur amino acid biosynthesis (Divol *et al.*, 2012); and/or modifying the overall metabolic and cell cycle that lead to a “viable but non-culturable” cell behaviour (Divol and Lonvaud-Funel, 2005; Salma *et al.*, 2013).

The effect of ethanol and sulfur dioxide on the individual antimicrobial action and resistance to stress of wine yeast of the *Saccharomyces cerevisiae* species has been studied in the past decades; however, relatively few studies discuss the joint effect of these compounds on yeast cells (Chandra *et al.*, 2015). Long lag phases and lazy fermentations during the second fermentation of sparkling wines are often reported in the industry. The results of a study on the preparation of starter cultures (*piéd de cuve*) for sparkling wine production indicate that differences in fermentative kinetics may be caused by differences in the content of ethanol and SO_2 in base wines (Benucci *et al.*, 2016). As reported in spoiling wine yeasts (Chandra *et al.*, 2014; 2015; Edwards and Oswald, 2018), the presence of ethanol and SO_2 can modify yeast behaviour and viability.

The second fermentation of sparkling wines is a delicate step in the process, which can impact

the final product. Predicting the progress of this step and any problems that may occur can be crucial for obtaining a quality sparkling wine. Many empirical reports express the concern of winemakers regarding this initial stage of the process, as well as their lack of full and sound understanding of what causes viability reduction and the increase in lag phase. For these reasons, we decided to explore the topic more deeply by determining whether the presence of both ethanol and SO_2 molecules causes synergism to the extent of modifying homeostasis and physiological stress responses in yeasts during inoculation and at the beginning of the second alcoholic fermentation of sparkling wines.

MATERIALS AND METHODS

The *Saccharomyces cerevisiae* yeast strain Lalvin EC-1118® (Lallemand, Canada) was used in all assays. This yeast strain is recommended and conventionally used in the second fermentation of sparkling wines. Moreover, its genome is already sequenced (Novo *et al.*, 2009), a factor that facilitated molecular analyses.

1. Experimental designs

1.1. Synthetic wine and inoculum preparation

All experiments evaluating the synergism between SO_2 and ethanol were conducted in a synthetic wine (Martí-Raga *et al.*, 2016) with 4 g/L tartaric acid, 0.5 g/L citric acid, 0.5 g/L malic acid, 0.134 g/L sodium acetate, 1.7 g/L YNB (with ammonium sulfate and without amino acids) and 4.0 g/L glycerol. The final pH of the solution was adjusted to 3.1 using sodium hydroxide. Different ethanol and sulfur dioxide concentrations were added to this medium following the experimental design.

For the adaptation of yeast (*piéd de cuve*) a modified protocol was followed (Benucci *et al.*, 2016). Briefly, a yeast colony (Lalvin EC-1118) was added to the YPD broth (2 % yeast extract, 2 % glucose, 1 % peptone, pH 6.5) and grown and shaken (150 rpm) at 28 °C for 20 hr. Next, for the adaptation of the inoculum, 10 % (v/v) ethanol, 50 g/L of sucrose and 3.5 g/L of dibasic ammonium phosphate were added to the synthetic wine. An equal volume of the base wine was added to the initial culture (1:1 v/v) and kept static at 20 °C for 24 h. This culture was then diluted with the synthetic wine to a ratio of 1:3 and maintained at a temperature of 20 °C for another 24 h. After this, in all treatments, 24 g/L of sucrose

(for fermentation) was added to the synthetic wine and inoculated with 1.4×10^6 cells/mL of adapted yeasts.

1.2. The effect of ethanol and SO₂ during fermentation

The treatments were divided into four groups in triplicate: i) no EtOH or SO₂ (the control), ii) with 20 mg/L SO₂ (from potassium metabisulphite solution), iii) with 10 % v/v EtOH, and iv) with 20 mg/L SO₂ + 10 % (v/v) EtOH. The fermentations were monitored at a controlled temperature of 15 °C for 28 days (Figure 1). In this experiment, the yeast growth and viability were microscopically monitored as described in Section 2.1.

1.3. Evaluation of stress markers

The treatments were applied as previously described. In this experiment, the fermentations were also carried out under a controlled temperature of 15 °C for 6 days (Figure 2). Yeast growth and viability were determined by microscopic methods and colony-forming units (CFU) evaluated on YPD agar (methods described in Section 2.1.). Cell membrane integrity, intracellular ROS and intracellular pH were analysed by flow cytometry as described in Section 2.2.

1.4. Treatments with different concentrations of ethanol and SO₂

In this experiment, the treatments were divided into eight groups in duplicate: i) no added EtOH or SO₂ (the control), ii) 10 mg/L SO₂, iii) 20 mg/L SO₂, iv) 10 % EtOH, v) 10 % EtOH + 10 mg/L SO₂, vi) 5 % EtOH + 20 mg/L SO₂, vii) 10 % EtOH + 20 mg/L SO₂, and viii) 12 % EtOH + 20 mg/L SO₂. All the treatments were inoculated with 1.4×10^6 cells/mL of adapted yeasts. The fermentation temperature was held at 20 °C for 96 h (Figures 3, 4, 5 and 6; Table 2). The cell membrane integrity/cellular vitality, intracellular ROS, intracellular pH, concentrations of reducing sugars, free SO₂ and acetaldehyde were evaluated as described in Sections 2.2. and 2.3. Gene expression was also quantified (see Section 2.4. for the method) and related to the presence of sulfur dioxide in the fermentation environment at the sample collection points closest to the time of inoculation (after 12 h and 24 h).

1.5. Second fermentation on an industrial scale

In the second industrial scale fermentation (traditional method), the base wine comprised a

blend (*assemblage*) of wines from the Chardonnay grape varieties (36 %), Riesling Italic (30 %), and Pinot Noir (34 %) (white vinified). The wine alcohol concentration was 11.2 % v/v, and it had a pH of 3.27, 80 mg/L of total SO₂ and 16.5 mg/L of free SO₂. Approximately 22 g/L of sucrose (*liqueur de tirage*) and an adapted inoculum were gradually added to the base wine following a specific company protocol. The percentage of ethanol in the inoculum at the time of inoculation was 13.3 % (v/v) and the total yeast population was 3.5×10^7 cells/mL with a viability of approximately 70 %. The base wine was inoculated with 1.4×10^6 cells/mL; that is 4 % (v/v) of the final fermentation volume. The bottles were kept at 12 °C for 21 days and three bottles were analysed weekly. The cell membrane integrity/cellular vitality and free SO₂ were analysed (methods described in Sections 2.2. and 2.3.).

2. Analyses performed

2.1. Yeast growth and viability assays

Growth and viability of yeast cells (exclusion tests) were performed using a light microscope (Olympus IX71) with a x 400 magnification using a Neubauer chamber, and viability was determined by staining with a 0.1 % Trypan Blue solution (Thermo Fisher Scientific, MA, EUA) (McGahon *et al.*, 1995). Moreover, viable and culturable cells were determined by serial dilution, plating and colony counting on YPD agar (1 % yeast extract, 2 % peptone, 2 % glucose and 2 % agar). The plates were incubated at 28 °C for 24 h, the colony units were counted and data expressed as colony-forming units (CFU/mL) (Fugelsang and Edwards, 2007).

2.2. Flow cytometer analyses

To carry out the analyses with the flow cytometer, samples were centrifuged to separate the cells (4629 x g for 5 min). Once separated, the yeasts were washed in phosphate buffered saline with a pH of 7.2 (PBS) and stained with specific fluorescent dyes.

Flow cytometry analyses were performed in a FACSCalibur flow cytometer (Becton-Dickinson, CA, USA) equipped with an argon-ion laser emitting at 488 nm. The flow cytometer data of 20,000 cells were acquired using CellQuest Pro software (BD Bioscience) and data analysis was carried out using FlowJo v.10 software (TreeStar, Inc). All samples were incubated for 30 min in the dark before analysis.

The cellular vitality and cell membrane integrity were determined using the LIVE/DEAD™ FungaLight™ Yeast Viability Kit (Thermo Fisher Scientific), which includes 5-carboxyfluorescein diacetate acetoxymethyl ester (CFDA) - cleaved by nonspecific esterases resulting in a fluorescent product - and propidium iodide (PI), which only penetrates membrane damaged cells. The staining and flow cytometry analyses were performed according to the manufacturer's recommendations.

The intracellular ROS (Reactive Oxygen Species) was analysed with 2'-7'-dichlorofluorescein diacetate (DCFH-DA) (Sigma, MO, USA). A two-electron oxidation of DCFH-DA results in the formation of a fluorescent product, dichlorofluorescein (DCF) (Kalyanaraman *et al.*, 2012); the fluorescence intensity of DCF is related to the amount of ROS within the cells. Stock solutions were prepared by dissolving DCFH at 5 mg/ml in DMSO (dimethylsulfoxide). Staining was performed in 500 µl of sample and 5 µg/ml of dye solution.

The intracellular pH was determined using the fluorescent probe pHrodo Green AM Intracellular pH Indicator (Thermo Fisher Scientific). The pHrodo Green is slightly fluorescent at neutral pH and fluorescent in acid conditions. The sample preparation procedure was performed according to the manufacturer's recommendations. The results were expressed in relative fluorescence, because, due to the low pH of the wines, part of the treatments remained outside the ideal range of pH variation detectable by pHrodo Green (pH 9-4).

The sizes of the cells were compared using forward scatter measurement (FSC); the intensity of the FSC is proportional to the diameter of the cell and is mainly due to the diffraction of light around the cell (Leif, 1986).

2.3. Physicochemical analyses

These analyses were performed together from samples of the supernatant (samples centrifuged 4629 x g for 5 min) which had been frozen at the time point of each collection. Total reducing sugars (g/L) were evaluated via the hydrolysis of sucrose in an acid medium and colorimetric method using 3,5-dinitrosalicylic acid (DNS) and microplate reader (absorbance 595 nm) (Dos Santos *et al.*, 2017). The acetaldehyde (ethanal) concentration (mg/L) was quantified using the colorimetric method (acetaldehyde reacts with sodium nitroferricyanide and piperidine solution)

using a spectrophotometer (570 nm absorbance), and the calibration curve was obtained directly using acetaldehyde in different concentrations, as adapted from the OIV method (OIV, 2009). Free SO₂ (mg/L) was estimated according to the Ripper titrimetric method using iodate (Zoecklein *et al.*, 1999).

2.4. Gene expression

RNA extraction was performed according to a protocol specific for *Saccharomyces cerevisiae* (Shedlovskiy *et al.*, 2017). The extracted RNA was treated with DNase I (Thermo Fisher Scientific) following the manufacturer's protocol. The absence of contaminant genomic DNA in the RNA was checked before cDNA synthesis using RNA as a template for a PCR assay. The RNA was reversed-transcribed into cDNA with the M-MLV Reverse Transcriptase (Thermo Fisher Scientific) following the manufacturer's protocol. The primers for qRT-PCR are shown in Table 1. Their sequences were obtained from published studies and by using the Primer designing tool system on the NCBI website (Primer-BLAST). Primers were purchased from Thermo Fisher Scientific.

Real-time PCR was performed in Applied Biosystems StepOne qRT-PCR (Thermo Fisher Scientific) using SYBR Green as a fluorophore. Reactions were carried out in 20 µL of mix containing 10 µL of Platinum™ SYBR™ Green qPCR SuperMix-UDG dye (Thermo Fisher Scientific), 2.0 µL of primer mix (200 nM final concentration), and 8 µL of cDNA. The thermocycling programme consisted of one hold at 95 °C for 3 min, followed by 40 cycles of 15 s at 95 °C, 30 s at 60 °C and 30 s at 72 °C. After the cycles, melting-curves data were collected to verify PCR specificity and contamination. Moreover, in an initial experiment, three potential housekeeping genes were evaluated: *ACT1*, *TEF1*, and *IPPI*. As all of them gave similar Ct values for the different samples, *ACT1* was selected for further analysis.

With the values obtained from the expression of each gene in the treatments, ΔC_T was calculated by subtracting C_T (threshold cycle) of the reference gene (*ACT1*) from C_T of the target gene. Afterwards, $\Delta\Delta C_T$ was calculated [ΔC_T (target sample) - ΔC_T (sample reference)], subtracting the ΔC_T of the genes from the treatment samples (20 mg/L SO₂ without EtOH, - 10 % EtOH without SO₂, 10 % EtOH + 20 mg/L SO₂) by the control sample (without EtOH and without SO₂). Then the formula for the comparative method was applied

TABLE 1. Genes and primers used in qRT-PCR

Gene	Primer F (5' - 3')	Primer R (5' - 3')	Size (bp)	Function	Reference
<i>ACT1</i>	TCGCCTTGGACTTCGAACAA	CAAAGCTTCTGGGGCTCTGA	128	Housekeeping gene	This paper
<i>IPPI</i>	AGCCAGTTTCTGCCTTCCACGA	TGGTGAATTTCTAACTTGGCGTTGGT	111	Housekeeping gene	This paper
<i>TEF1</i>	GGTACTCTCCAGTTTTGGATTGTC	ACGAACTTGACCAAAAGCAGC	149	Housekeeping gene	(Nardi <i>et al.</i> , 2010b)
<i>COM2</i>	AGCCTTGGTTGTGAACCCAT	GCGTGGTCACTCTCATCACT	185	SO ₂ tolerance regulator	This paper
<i>FZF1</i>	CCAGAGAGTTACTGGTCGGATA	CGTGTGGTCATAGTGGTCAAT	102	SO ₂ chemical induction	(Garcia-Rios <i>et al.</i> , 2019)
<i>MET14</i>	AGAAGTCGCTGAGCAAAAGGG	TTCAACCGTCTTCTGGTCCG	145	Sulfur assimilation pathway	This paper
<i>SUL1</i>	CACTGGGTGGGTACTGTC	ATGAGAGCCGGAAATTTGACC	120	Sulphate permease	(Chen <i>et al.</i> , 2018)
<i>SUL2</i>	AAGGGAGAACGACCCCTGAAT	TGGCCCTTCTCAAATCAACC	161	Sulphate permease	(Jennings and Cui, 2012)
<i>SSU1</i>	TTTGCGTTTGTGGTCAAATCTATGCCTTTA	TCCACGCTTTCAAATGCTGTATACGGAGAA	151	SO ₂ influx of compound	(Nardi <i>et al.</i> , 2010a)

($2^{-\Delta\Delta Ct}$) (Livak and Schmittgen, 2001), giving a value for the relative expression of the genes or RQ.

3. Statistical analysis

Statistical analyses were performed by two-way ANOVA and Tukey's multiple comparisons test, using a level of significance of 95 %. Graphs and statistical analyses were performed using the Graphpad Prism® software (GraphPad, CA, USA).

RESULTS

1. The effect of ethanol and SO₂ during fermentation and evaluation of stress markers

In the first experiment, it was possible to verify the impact caused by SO₂ and ethanol on yeast viability and cell growth. As can be observed in Figure 1, yeast cells grown on the control medium showed high viability throughout the experiment and exhibited a typical growth behaviour, attaining the stationary phase with approximately 5×10^7 cells/mL after 8 days. On the medium supplemented with SO₂ (20 mg/L), the yeast population underwent a small (approximately 20 %) reduction in viability in the first few days (Figure 1A), which was maintained until the end of fermentation. This initial reduction in yeast viability caused a delay in population growth, but it reached almost the same final cell density as the control (Figure 1B). However, in the medium

with EtOH (10 %), cell viability remained high throughout the fermentation, but yeast growth was drastically reduced (Figure 1A and 1B).

Conversely, in the medium containing both EtOH and SO₂ (10 % EtOH + 20 mg/L SO₂), a drastic reduction in yeast viability during the first few days was observed, reaching 2 % on the sixth day (Figure 1A). After this point, the cell population started to grow slowly (Figure 1B), remaining relatively low compared to the control. At the end of the experiment (28 days) the yeast population in EtOH + SO₂ medium was just 1/6 of the control and SO₂ treatments, and 1/2 of the EtOH treatment (Figure 1B). These data indicate that EtOH and SO₂ have a synergistic effect on yeast viability and growth.

To better understand the effect of ethanol and SO₂, and their synergistic effect on yeasts, we conducted a new acute experiment (144 h), monitoring cell viability, vitality, intracellular ROS and intracellular pH. As shown in Figure 2 (A, B, C and D), this experiment confirmed the synergistic effect of ethanol and sulfur dioxide, which together cause a drastic reduction in cell growth and viability. Yeast growth, determined by microscopic cell counting (Figure 2A) and colony-forming units (Figure 2B) showed a considerable reduction in yeast growth in the presence of sulfur dioxide and, in particular ethanol. However, yeast growth was completely inhibited by the presence of both ethanol and sulfur dioxide in the synthetic wines.

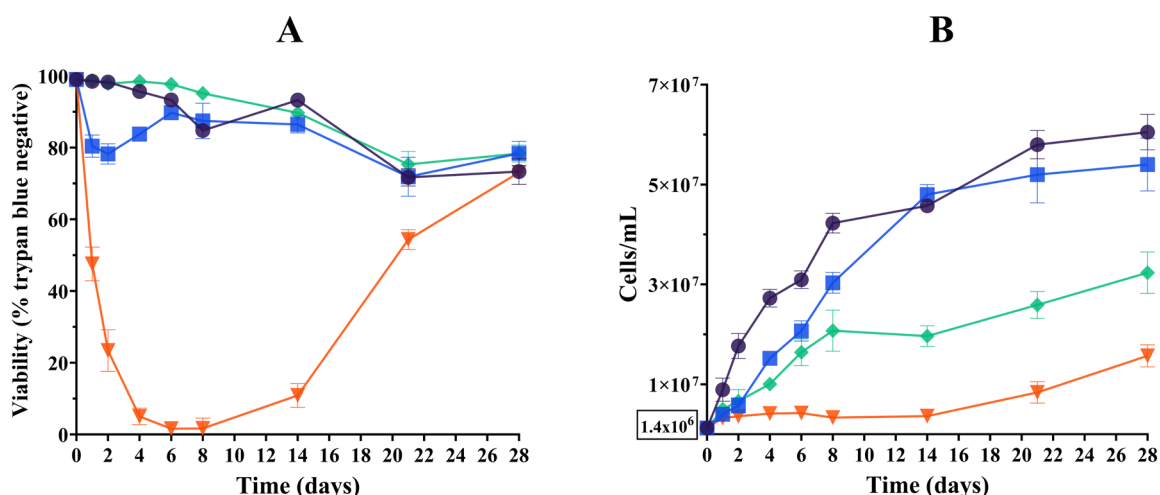


FIGURE 1. Synergism, viability, and growth in synthetic wine. Cell membrane integrity (viability) was assessed with a light microscope and Neubauer chamber, and using trypan blue exclusion dye (A); population growth was estimated using light microscope and Neubauer chamber (B). (●) Control; (■) 20 mg/L SO₂; (◆) 10 % (v/v) EtOH; (▼) 10 % EtOH + 20 mg/L SO₂. The error bars in the line graphs represent the standard deviation obtained from triplicate samples within the same experiment.

The cell viability results obtained using trypan blue (Figure 2C) and PI (Figure 2D) showed high viability (> 95 %) in the control- and ethanol-containing medium.

Yeasts cultivated in the medium supplemented with SO₂ exhibited an initial reduction in viability (after 24 and 48 h), followed by an increase in viability associated with population growth.

Conversely, yeasts cultivated in EtOH + SO₂ medium showed a drastic and rapid reduction in viability.

The cytometric analysis of intracellular ROS using the DCFH-DA dye showed a basal low ROS concentration for yeast cells grown in the control medium and in the media that contained just ethanol or SO₂.

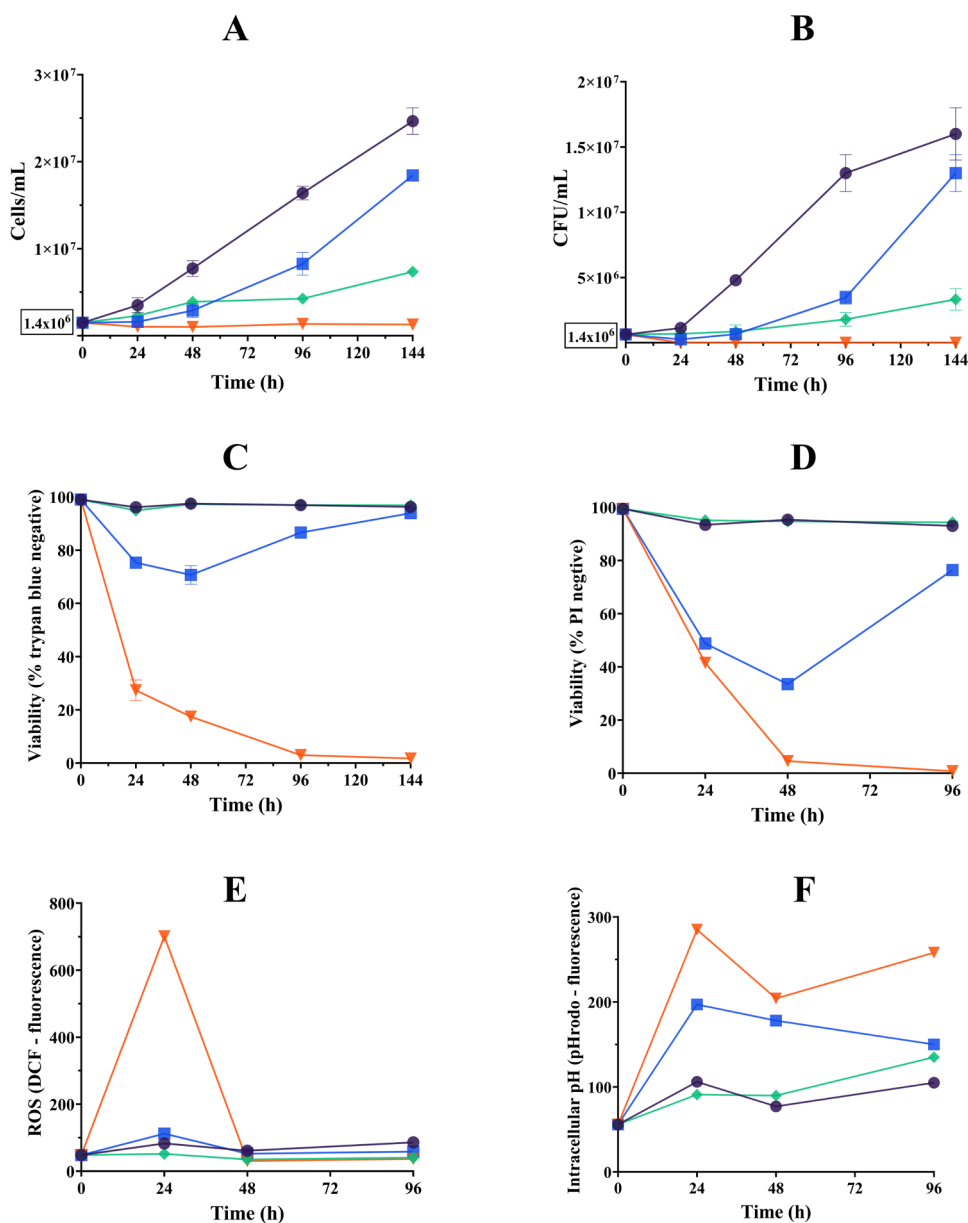


FIGURE 2. Stress caused by synergism between EtOH and SO₂. Estimation of population growth using the light microscope and Neubauer chamber (A); viability test and growth with colony-forming units (CFU) (B); cell membrane integrity (viability) assessed with the light microscope, Neubauer chamber and using trypan blue exclusion dye (C); cell membrane integrity (viability) assessed with flow cytometer + PI (D); intracellular ROS analysed with flow cytometer + DCFH-DA (E); intracellular pH analysed with flow cytometer + pHrodo Green AM (F). (●) Control; (■) 20 mg/L SO₂; (◆) 10 % EtOH; (▼) 10 % EtOH + 20 mg/L SO₂. The error bars in the line graphs (A, B and C) represent the standard deviation obtained from triplicate samples within the same experiment.

However, a peak in intracellular ROS occurred on the first day of the treatment supplemented with both ethanol and SO₂ (Figure 2E), suggesting that together these compounds cause greater oxidative stress and may have also influenced the drastic reduction in cell viability.

The analysis of intracellular pH and treatments with SO₂ and with EtOH + SO₂ revealed considerable changes in the fluorescence of the dye (the higher the fluorescence, the lower the pH). However, the EtOH + SO₂ treatment exhibited the highest fluorescence (lower pH) throughout the experiment. This corroborates the results of the other analyses (Figure 2) which showed that the

treatment with both molecules intensified the stress in yeast cells, indicating a synergistic effect had taken place. At the end of the experiment, the SO₂ treatment contained 5 mg/L of free SO₂, compared to 10 mg/L in the EtOH + SO₂ treatment.

2. The interaction of different concentrations of ethanol and sulfur dioxide concentrations in yeasts

The control, 10 mg/L SO₂, 10 % EtOH and 10 % EtOH +10 mg/L SO₂ treatments showed almost the same behaviour for all variables, except for sugar consumption (Figure 3B), with the presence of ethanol decreasing fermentation rate.

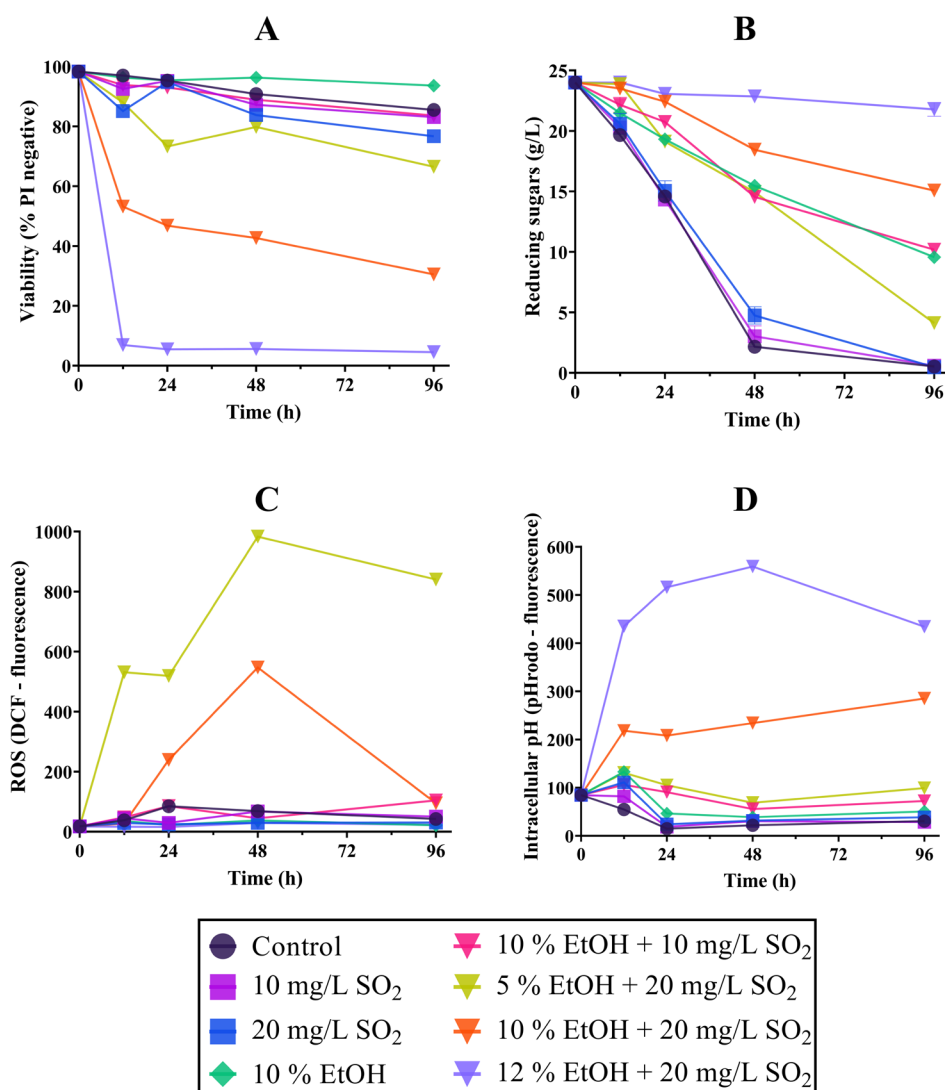


FIGURE 3. Different concentrations of EtOH and SO₂. Cell membrane integrity (viability) assessed with flow cytometer + PI (A); monitoring of consumption of total reducing sugars (B); intracellular ROS analysed with flow cytometer + DCFH-DA (C); intracellular pH analysed with flow cytometer + pHrodo Green AM (D). The error bars in the line graphs (B) represent the standard deviation obtained from duplicate samples within the same experiment.

However, treatments that include both ethanol (5 to 12 %) and sulfur dioxide (20 mg/L) exhibited a reduction in fermentation rate and cell viability proportional to the ethanol concentration. As can be observed in Figures 3A and 3B, the treatment with 5 % EtOH + 20 mg/L SO₂ showed a 27 % reduction in yeast viability in the first 24 h, which was maintained until the 96 h time point, resulting in sluggish fermentations. Treatments with 10 % and 12 % ethanol + 20 mg/L of SO₂ showed a remarkable decrease in cell viability in the first 12 h (by 45 and 95 % respectively) and a proportional inhibition of sugar consumption.

Yeast cells grown in 5 % EtOH + 20 mg/L SO₂ and 10 % EtOH + 20 mg/L SO₂ exhibited a considerable increase in intracellular ROS (Figure 3C): In the former treatment, the ROS which had accumulated during the first 48 h remained high until the end of the experiment, while in the latter, ROS showed a constant increase during the first 48 h, followed by a sharp decrease thereafter. Interestingly, the yeasts in the more severe treatment (12 % EtOH + 20 mg/L SO₂) did not accumulate intracellular ROS - a fact that may be related to the high mortality (> 95 %) observed in this treatment - indicating that ROS accumulation depends on metabolic activity.

Regarding the intracellular pH, data in Figure 3D show that yeast cells cultivated in the highest concentrations of EtOH and SO₂ (10 % EtOH + 20 mg/L and 12 % EtOH + 20 mg/L SO₂) showed greater fluorescence (lower pH intracellular) than the control and the other treatments. This decrease seems to be correlated with the percentage of cells with a damaged membrane, which may indicate the entry of a greater amount of SO₂ into the intracellular environment and/or the failure of proton efflux.

The results of the analysis of yeast using two fluorescent markers (CFDA and PI; Figure 4) showed that EtOH (10 %) did not interfere with yeast cell enzyme activity (vitality) immediately after inoculation (12 h), corroborating the data presented in Figures 1A, 2C, 2D and 3A. Conversely, treatments with 20 mg/L of SO₂, and 10 % EtOH + 20 mg/L of SO₂, had completely different behaviour. In the treatment of 20 mg/L of SO₂, initial stress was observed with a drop in vitality (lower CFDA fluorescence) and a small increase in cells with a damaged membrane (PI positive). In the second treatment (10 % EtOH + 20 mg/L SO₂), yeast cells showed four populations distributed in different quadrants, indicating a higher level of stress, with a considerable

increase in the number of cells with the damaged membranes (quadrant Q3). Moreover, an increase of just 2 % EtOH (12 % EtOH + 20 mg/L SO₂) resulted in a significantly higher number of cells with membrane dysfunction even after a short 12 h exposure (more than 90 %).

The comparison of cell size using direct dispersion measurement (FSC) by flow cytometry analysis (Figure 5) showed that yeast cells in the control and the 10 and 20 mg/L SO₂ treatments exhibited a “normal” distribution, while yeast cells subjected to 10 % EtOH showed a small percentage of larger cells (Figure 5A). The treatments that cause a more marked reduction in yeast viability (10 % EtOH + 20 mg/L SO₂, 12 % EtOH + 20 mg/L SO₂), showed a high percentage of cells with reduced size (Figure 5D), thus indicating modifications having been made to cell permeability and water content or a possible modification to the metabolism of the membrane lipids (phospholipids).

One of the most important compounds involved in sulfur dioxide neutralisation is acetaldehyde, which is produced during alcoholic fermentation and combines with sulfur dioxide, thus reducing the amount of free SO₂. The results of the analyses of free SO₂ and acetaldehyde (Table 2) show that only the treatments with considerable fermentative activity (Figure 3B) showed a large decrease in free SO₂; meanwhile, the treatment with 12 % EtOH + 20 mg/L SO₂, which exhibited a dramatic inactivation of yeast, showed the lowest acetaldehyde production and maintained high levels of free SO₂ throughout the fermentation process. The treatments with SO₂ showed an increase in acetaldehyde concentration (mainly within 12 h) in comparison to the control, as did those with ethanol alone. The treatments with both molecules (10 % EtOH + 10 mg/L SO₂ and 5-10 % EtOH + 20 mg/L SO₂) showed higher concentrations of acetaldehyde than the other treatments.

Yeast responds to a stress factor (in this case SO₂ and ethanol) with a differential expression of genes that contribute to cell viability and homeostasis. As shown in previous figures, in mid- or non-lethal concentrations of ethanol and sulfur dioxide, a yeast population can adapt and grow, albeit slowly. This “adaptation” involves the differential expression of genes, the products of which contribute to yeast cell homeostasis, metabolism and eventual division. In this context, we evaluated the expression of several genes associated with sulfur transport and metabolism. As can be observed in Figure 6A, the *SSUI*,

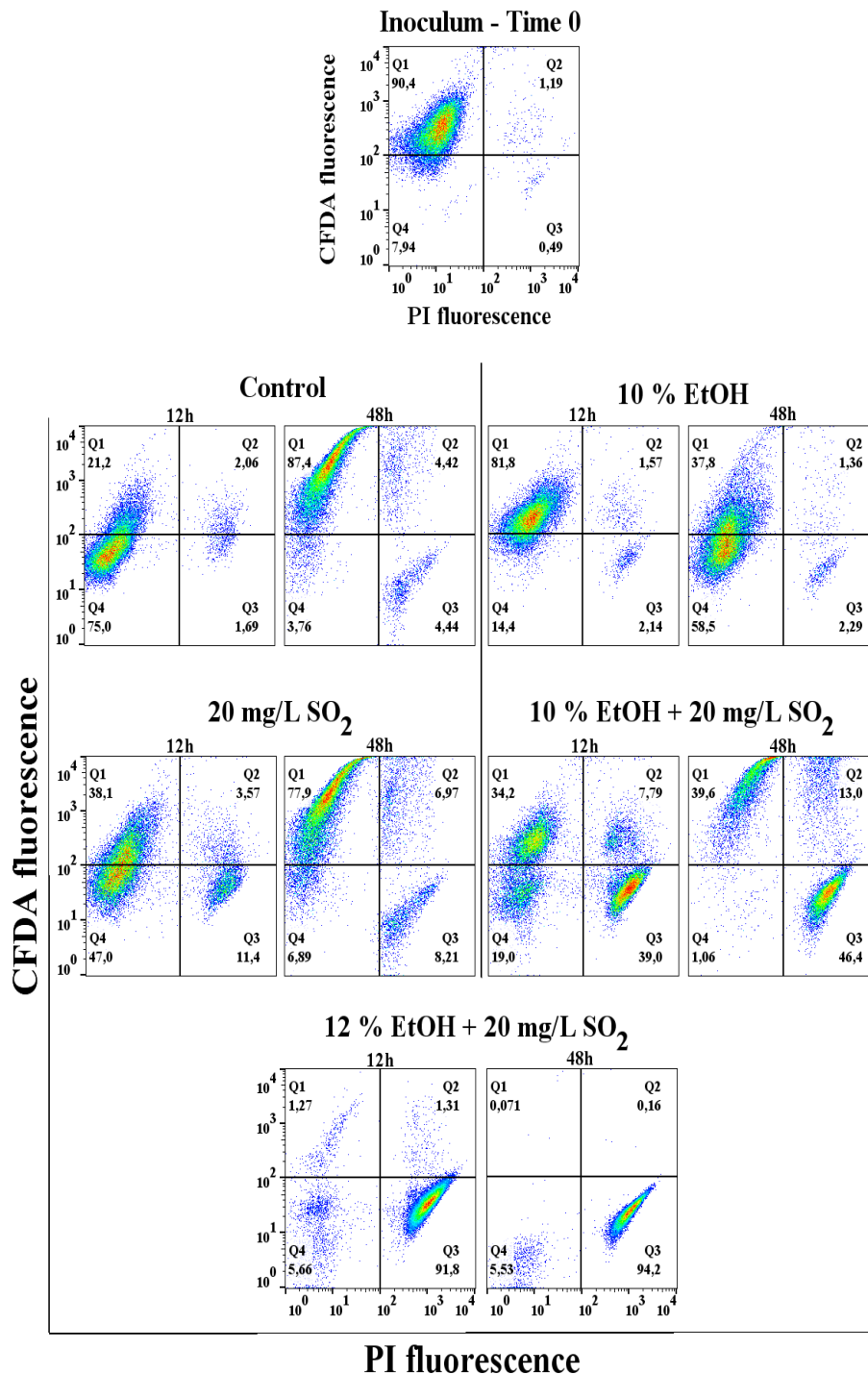


FIGURE 4. Vitality versus viability. Flow cytometer analysis of the third test using the LIVE/DEAD™ FungaLight™ Yeast Viability Kit (CFDA/PI).

MET4, and *FZF1* genes were hyper-expressed in yeasts grown in 10 % EtOH + 20 mg/L SO₂ compared with the treatments that contained just ethanol or SO₂. However, the *SUL1* gene showed higher expression in both 10 % EtOH and 10 % EtOH + 20 mg/L SO₂ treatments, while *SUL2* exhibited higher expression in the treatments that contained SO₂. The *COM2* gene expression did not vary among treatments.

After 24 h (Figure 6B), the yeast cells subjected to 10 % EtOH and 10 % EtOH + 20 mg/L SO₂ showed higher expression of *SSUI* and, in particular, *MET14* genes than the control and the SO₂ treatments. However, the high expression of *SUL1* and *SUL2* observed in the first few hours was not evident after cell adaptation to ethanol and sulfur dioxide stress.

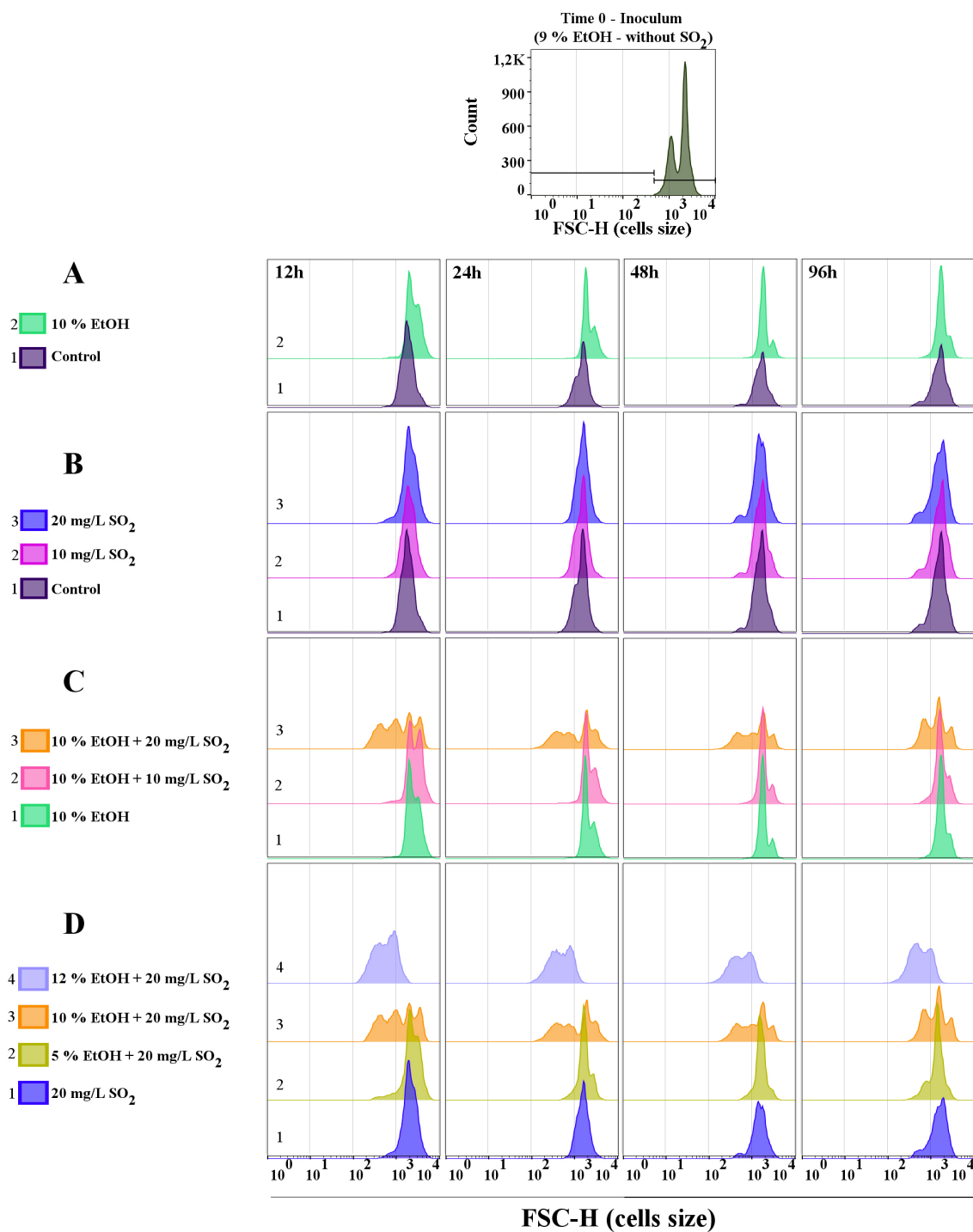


FIGURE 5. Differences in cell size. Analysis was performed with flow cytometry using direct dispersion measurement (FSC). The intensity of the FSC is proportional to the diameter of the cell.

TABLE 2. Analysis of free SO₂ and acetaldehyde over time.

SAMPLE	FREE SO ₂ (mg/L)					ACETALDEHYDE (mg/L)			
	Time					Time			
	T0	12 h	24 h	48 h	96 h	12 h	24 h	48 h	96 h
Control	-	-	-	-	-	27.4±2 ^{ef}	23.3±8 ^{ee}	45.5±5 ^d	53.8±7 ^d
10 mg/L SO ₂	10±0 ^A	3.2±1 ^B	3.2±1 ^B	3.2±1 ^B	3.2±0 ^B	40.8±2 ^{de}	39.3±2 ^c	52.8±12 ^{ed}	70.3±1 ^{ed}
20 mg/L SO ₂	20±0 ^A	3.8±0 ^B	3.8±0 ^B	3.2±0 ^B	3.2±0 ^B	62.1±1 ^{cd}	42.4±3 ^c	64.1±22 ^{bcd}	78.1±1 ^{cd}
10 % EtOH	-	-	-	-	-	99.3±5 ^b	68.3±5 ^b	62.1±1 ^{bc}	78.6±7 ^c
10 % EtOH + 10 mg/L SO ₂	10±0 ^A	3.2±1 ^B	3.2±1 ^B	3.2±0 ^B	3.2±0 ^B	125.2±2 ^a	82.8±1 ^{ab}	77.6±2 ^b	105.5±7 ^b
5 % EtOH + 20 mg/L SO ₂	20±0 ^A	3.84±0 ^B	3.2±1 ^B	3.2±0 ^B	3.2±0 ^B	125.2±1 ^a	68.8±1 ^{ab}	84.8±5 ^b	130.4±5 ^a
10 % EtOH + 20 mg/L SO ₂	20±0 ^A	4.8±0 ^{BC}	3.8±0 ^C	3.2±0 ^D	3.2±0 ^D	68.8±2 ^c	93.1±1 ^a	111.2±1 ^a	119.0±6 ^{ab}
12 % EtOH + 20 mg/L SO ₂	20±0 ^A	15.4±0 ^B	14.8±1 ^B	14.8±1 ^B	12.5±0 ^C	8.1±0 ^f	7.2±1 ^e	4.5±1 ^e	0.1±0 ^e

*The values are shown with mean ± standard deviation (SD) obtained from replicated samples (duplicate) within the same experiment. In the free SO₂ column, statistical calculations were performed on each row (differences in the sample itself over time), which are represented by capital letters. In the columns with acetaldehyde analyses, treatments at each time point are compared (differences per column at each time point) and are represented with lower-case letters. Distinct letters are significantly different according to the Tukey test ($P \leq 0.05$).

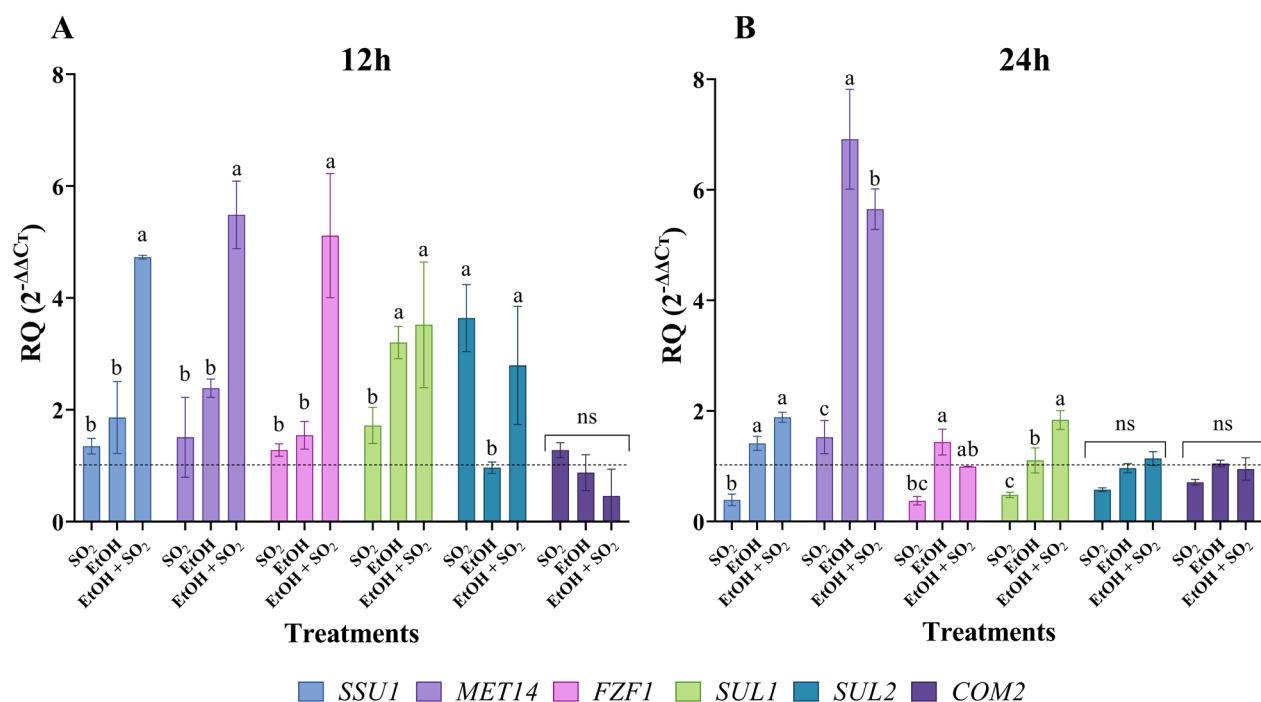


FIGURE 6. Analysis of relative expression (RQ). The dotted line represents Value 1 of the control treatment. Bars represent RQ values of each gene relative to the control treatment (dotted line). SO₂ = 20 mg/L SO₂; EtOH = 10 % EtOH; EtOH + SO₂ = 10 % EtOH + 20 mg/L SO₂. The error bars are the standard deviation of three replications of the same treatment. Different letters denote significantly different mean values by the Tukey test ($P \leq 0.05$); ns = not significant.

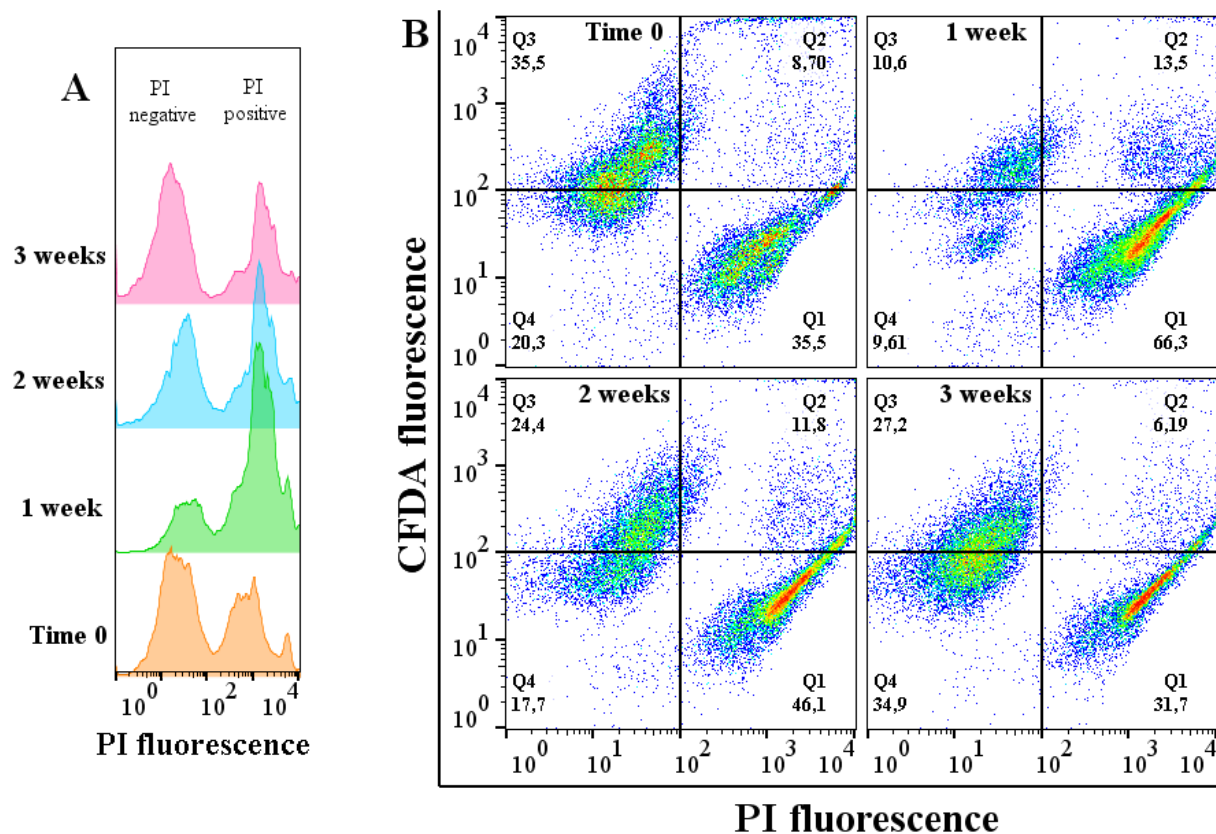


FIGURE 7. Flow cytometer analysis of the first four weeks of fermentation using the LIVE/DEAD™ FungaLight™ Yeast Viability Kit. The graph as a histogram (PI) (A). Cell concentration map (CFDA/PI) (B).

3. Vitality and viability of yeasts on an industrial scale

Figure 7 shows yeast vitality and viability during the first three weeks of the second fermentation of a sparkling wine made by the traditional method. As can be observed, just before inoculation, a lower number of cells were stained with PI, indicating a higher number of cells with an intact cell membrane (inoculum at time 0). However, one week after inoculation, there was a considerable increase in cells with damaged cell membranes (PI positive cells). Moreover, at this point, the living cells (PI negative) exhibited a lower esterase activity than the control, which reflects a reduction in cell metabolism. In the second and third weeks, the number of viable (PI negative) and overall metabolism (CFDA fluorescence) increased. In the 2nd and 3rd week, there was an increase in cells with damaged plasma membrane that prevented the entry of the dye, as well as an increase in cells containing the active esterase enzyme. During this period, free SO₂ decreased from 16.5 mg/L (time 0) to 5.5 mg/L (after 2 weeks). The behaviour of the yeasts during the

industrial scale second fermentation of a real wine showed a similar effect (decrease in vitality and viability) to that in synthetic wines with similar concentrations of ethanol and free SO₂ (Figure 4).

DISCUSSION

Empirical observations in wineries report frequent problems at the start of and during the second fermentation of sparkling wines in both traditional and Charmat processes. In general, the practical solutions adopted in these cases are pre-adaptation and reinoculation with yeasts, which is costly and laborious, especially for traditional sparkling wines. Furthermore, industrial data show that these problems are associated with a considerable reduction in yeast viability. In an attempt to explain the occurrence of these problems, we carried out a series of experiments in synthetic wine to determine the effects of high concentrations of ethanol and the presence of free sulfur dioxide, and the synergism between the two, on the vitality, viability and other parameters of yeasts.

The present study shows that the synergism between ethanol and SO₂ can be considered

to be the main stress factor for yeasts at the beginning of the second fermentation (lag phase) in the production of sparkling wines. Depending on the concentrations of ethanol and SO₂, this synergism modifies cellular homeostasis, deregulates intracellular pH (loss of internal buffering capacity), increases oxidative stress, and interferes with the regulation of gene expression, which can negatively impact the vitality and viability of yeasts, slowing or even interrupting the fermentation process.

The data obtained for the synthetic wine that were supplemented with ethanol, sulfur dioxide and ethanol/sulfur dioxide (Figures 1, 2, 3 and 4), and real base wines (Figure 7) showed the synergistic effect of ethanol and sulfur dioxide on the vitality and viability of yeasts. Despite the yeasts having been adapted, the results show that whether inoculated in an environment with an ethanol concentration close to that of base wines or in an industrial base wine, yeast grows slowly but maintains high viability. This behaviour may be due to fluidisation (Huffer *et al.*, 2011; Jones and Greenfield, 1987), the depolarisation of membrane potential by an increased passive proton flux and inhibition of nutrient uptake (Casey and Ingledew, 1986) and a delay in the cell cycle (Kubota *et al.*, 2004). Moreover, cells grown in synthetic wine without ethanol and supplemented with 20 mg/L of SO₂ maintained a normal growth rate and high viability, as has been observed in grape must fermentations (Ferreira *et al.*, 2017). Conversely, yeast inoculated in wine containing both ethanol and sulfur dioxide exhibited a rapid and strong decrease in cell viability, indicating their synergistic effect on the yeast. The low number of cells that remained viable after the initial shock slowly resumed growth, resulting in a long lag phase and slow fermentation.

The results of the experiment on synthetic musts supplemented with different concentrations of sulfur dioxide show that there was a dose-dependent longer lag phase; the yeasts started to multiply when free SO₂ concentration decayed to approximately 5 mg/L on combination with yeasts and fermentation-derived products, such as acetaldehyde (Ochando *et al.*, 2020). However, in the presence of high ethanol concentrations (> 10 % v/v), yeast growth is limited (Jing *et al.*, 2018), and consequently free SO₂ concentrations remain high for longer periods of time. Moreover, the presence of ethanol in real wine leads to an increase in SO₂ pKa, which, according to the expression of Henderson–Hasselbalch [free

SO₂/1 + 10(pH-pKa1)] increases the molecular SO₂ fraction and consequently its antimicrobial activity.

The reduction in yeast viability during the beginning of fermentation in the presence of sulfur dioxide, and particularly sulfur dioxide and ethanol, is associated with the loss of cell membrane integrity (Figure 2), which is considered a marker of necrotic death (Wloch-Salamon and Bem, 2013). Furthermore, the cells which survived the exposure to ethanol/SO₂ showed a large increase in the intracellular concentration of ROS (Figures 2E and 3C). Experimental data (Figure 3C) indicates that ROS accumulation in ethanol/sulfur dioxide interaction depends on cell metabolism. The accumulation of ROS is one of the main determinants of apoptotic cell death (Farrugia and Balzan, 2012). Apoptosis can function as a defence and preservation mechanism of cell populations in the face of stress (viral pathogens, homeostasis change, nutrient insufficiency and other adverse conditions), ensuring that part of the cells survive to propagate their genome (Fröhlich and Madeo, 2000). When comparing both results obtained regarding ROS accumulation (Figures 2E and 3C), it is possible to observe a difference in fluorescence formation kinetics and intensity. This difference may be related to the temperature at which both experiments were conducted (15 °C Figure 2 and 20 °C figure 3) at the time of the analysis; the populations were at different theoretical stages of fermentation, since the fermentation temperature modifies metabolism and fermentation kinetics (Alexandre, 2019).

It is known that the intracellular pH of yeasts decreases in the presence of sulfur dioxide (Pilkington and Rose, 1988). In an aqueous solution, SO₂ (acid oxide-sulfur dioxide) in its molecular form (SO₂) enters cells more easily, because it has no charge, and the molecule rapidly dissociates to form bisulphite (HSO₃⁻) and sulphite (SO₃²⁻) anions (Divol *et al.*, 2012). SO₂ behaves like a weak acid in aqueous environments (Waterhouse *et al.*, 2016). Moreover, studies of changes to cell membrane caused by ethanol have shown that it increases passive water transport (Madeira *et al.*, 2010), modifies cell membrane fluidity and decreases H⁺-ATPase activity, which is responsible for maintaining intracellular pH (Aguilera *et al.*, 2006). This modification to membrane structure may facilitate the diffusion of molecular SO₂ into the cytoplasm, which has no charge. The molecular SO₂ fractions found in a solution depends on the pH for a

modification of the dissociation constant to occur ($\text{SO}_2 + \text{H}_2\text{O} \leftrightarrow \text{SO}_2 \cdot \text{H}_2\text{O}$; $\text{SO}_2 \cdot \text{H}_2\text{O} \leftrightarrow \text{HSO}_3^- + \text{H}^+$; $\text{HSO}_3^- \leftrightarrow \text{SO}_3^{2-} + \text{H}^+$) (Divol *et al.*, 2012; Gould and Russell, 2003; Ribéreau-Gayon *et al.*, 2006; Waterhouse *et al.*, 2016). The reduction of intracellular pH (loss of internal buffering capacity) may be the result of a “snowball effect”, because the lower the cell's intracellular pH, the higher the percentage of the molecular form of SO_2 that would theoretically remain active within the cell, leading to the disruption of cell homeostasis and thus cell death. This hypothesis is reinforced by ethanol having a dose-dependent effect when in association with sulfur dioxide (Figure 3).

Another interesting fact is the size of yeast cells depends on their environment. In the presence of ethanol, there is a tendency for cell structure to change and for part of the cell population to become larger (it becomes swollen) (Figure 5); such an effect on the diameter of *Saccharomyces cerevisiae* cells has been described in other studies (Dinh *et al.*, 2008; Kubota *et al.*, 2004). However, death caused by the presence of SO_2 and ethanol decreases cell size (Figure 5). Our results indicate that there may be a relationship between cell size and loss of plasma membrane integrity (PI + cells); the percentage of inactivated cells is almost the same as that of cells that become smaller in treatments with 10 % EtOH + SO_2 20 mg/L and 12 % EtOH + SO_2 20 mg/L.

In alcoholic fermentation, the production of acetaldehyde by yeasts plays an important role when in combination with free SO_2 (Rankine and Pocock, 1969), because it decreases the antimicrobial action of SO_2 (Liu and Pilone, 2000). The excess of acetaldehyde produced by the decarboxylation of pyruvate during fermentation is secreted, instead of being used in the production of ethanol or acetic acid (Liu and Pilone, 2000). Increased acetaldehyde has been reported in the second fermentation of sparkling wines (Pozo-Bayón *et al.*, 2003), and more acetaldehyde has been found to form in some yeasts (including the EC1118 strain) in the presence of exogenous SO_2 in must fermentations (Li and Mira de Orduña Heidinger, 2020; Li and Mira de Orduña, 2017). However, in the literature, no correlation between the increase in extracellular acetaldehyde and greater stress during the second fermentation of wines in the presence of EtOH and EtOH + SO_2 has been made, in contrast to the present study (Table 2). Our results point to a greater formation of acetaldehyde when ethanol and SO_2 are present together, which corroborates with

the results that show an increase in stress when both molecules are present. Another important factor is the relationship between the formation of acetaldehyde by yeasts and their overcoming stress and consequently leaving the lag phase. This was clearly seen in the treatment with 10 % EtOH + 20 mg/L of SO_2 in which there was a delay in acetaldehyde production, probably due to reduced viability (Figures 3A and 4). In the treatment with 12 % EtOH + 20 mg/L of SO_2 practically no acetaldehyde was formed to combine SO_2 and overcome stress, and almost the entire yeast population was inactivated (Figures 3 and 4).

The regulation of gene expression plays an important role in an organism's development and its response to physiological and environmental changes; it can be responsible for the survival of a group of cells and its growth after a period of latency. The results obtained in terms of relative gene expression showed that, compared to the other treatments, there was an increase in the expression of several of the genes involved in sulfur sensing and metabolism in the 10 % EtOH + 20 mg/L SO_2 treatment after 12 and 24 hours (Figure 6). This agrees with the results of the other analyses that show a synergistic increase in stress in this treatment.

The *SUL1* and *SUL2* genes encode proteins located in the plasma membrane with sensory and sulphate (SO_4^{2-}) transport functions from the external environment into the cell (Kankipati *et al.*, 2015). While the *SUL2* was the most expressed in treatments with SO_2 only and *SUL1* the most expressed in ethanol only, both these genes were hyper expressed in the EtOH + SO_2 treatment (Figure 6). Moreover, in the EtOH + SO_2 treatment, *FZF1* and *SSU1* are more expressed than in the other treatments. The *FZF1* gene encodes a plasma membrane protein (Fzf1p) involved in the expression of the *SSU1* sulphite efflux pump (Avram *et al.*, 1999; Park and Bakalinsky, 2000). In turn, the *SSU1* gene, a marker of adaptive evolutionary advantage that is found in oenological yeast as a result of the use of sulphites in winemaking (García-Ríos *et al.*, 2019; Zimmer *et al.*, 2014), is positively correlated with the tolerance and detoxification mechanism of sulphite (Marullo *et al.*, 2020; Zara and Nardi, 2021).

The *MET14* gene, which encodes the APS kinase enzyme involved in the sulfur assimilation pathway that reduces sulphate to sulphide (Donalies and Stahl, 2002; Noble *et al.*, 2015), was hyper-expressed in the first 12 h of the EtOH + SO_2

treatment. However, after 24 h, gene expression seems to have been more influenced by the presence of ethanol only. As it is a metabolic route gene linked to the biosynthesis of sulfur amino acids, other factors - in addition to the presence of exogenous SO₂ - may influence its greater expression, such as the formation of sulphites by the yeast (Donalies and Stahl, 2002). Surprisingly, no change in expression was found for *COM2*, a gene whose product controls, directly or indirectly, the expression of more than 80 % of the genes activated by SO₂ (Lage *et al.*, 2019).

In general, the increase in the expression of these genes may indicate a response to a greater amount of intracellular SO₂ caused by the synergistic effect of ethanol/sulfur dioxide, as, theoretically, more proteins related to this stress would need to be synthesised to create an efficient sulphite efflux in order to survive.

In practical terms, the data obtained in this study show that winemakers should be particularly careful when adding sulphites to base wines for the production of sparkling wines; depending on their concentrations, free sulfur dioxide in the presence of ethanol can lead to the death of a large part of yeast population, and consequently to either the non-development of the second fermentation or a slow fermentation with a long latency phase. It is worth remembering that, when added to base wines to avoid microbial instability and oxidation, sulfur dioxide will remain as free SO₂, since most of the compounds which commonly bind to sulfur dioxide are removed from the lees of the first fermentation and during the stabilisation and filtering processes. Moreover, to attain 11 to 12 % ethanol in sparkling wines, the ethanol concentration of base wines must contain more than 10 % ethanol, which - as seen in this study - interacts with sulfur dioxide, thus increasing the risk of problems in the second fermentation. Therefore, sulphites may literally be responsible for headaches in consumers (Silva *et al.*, 2019), but their high concentrations in the production of sparkling wines can also be the cause of “headaches” for winemakers.

CONCLUSIONS

Depending on their concentrations, the presence of both ethanol and SO₂ in the fermentation environment causes synergism and increases stress on yeasts by modifying intracellular homeostasis, deregulating intracellular pH and increasing oxidative stress, thus leading to cell death. Moreover, ethanol/sulfur dioxide causes

yeasts to hyper-express genes related to sulphite tolerance in an attempt to overcome their negative effects. A reduction in the vitality and viability of a yeast population can either prevent the second fermentation of sparkling wines from occurring at all or increase its lag phase, thus causing serious technological problems that are difficult to overcome.

Acknowledgements: This study was supported by the Federal Institute of Education, Science and Technology of Rio Grande do Sul (IFRS), University of Caxias do Sul (UCS), and the *Coordenação de Aperfeiçoamento de Pessoal de Nível Superior - Brasil (CAPES)* - Finance Code 001. We would like to thank Philippe Mevel, Juliano Perin, Graciele Tomazi, Andressa Cattani, Jandir Furlanetto, and Eudes Fernando Trombini of the company, *Chandon do Brasil*, for their support, partnership, and knowledge exchange during the project.

REFERENCES

- Aguilera, F., Peinado, R. A., Millán, C., Ortega, J. M., & Mauricio, J. C. (2006). Relationship between ethanol tolerance, H⁺-ATPase activity and the lipid composition of the plasma membrane in different wine yeast strains. *International Journal of Food Microbiology*, 110(1), 34–42. <https://doi.org/10.1016/j.ijfoodmicro.2006.02.002>
- Alexandre, H. (2019). Yeasts and Sparkling Wine Production. In P. Romano, M. Ciani, & G. H. Fleet (Eds.), *Yeasts in the Production of Wine* (pp. 395–432). Springer New York. https://doi.org/10.1007/978-1-4939-9782-4_13
- Avram, D., Leid, M., & Bakalinsky, A. T. (1999). Fzf1p of *Saccharomyces cerevisiae* is a positive regulator of SSU1 transcription and its first zinc finger region is required for DNA binding. *Yeast*, 15(6), 473–480. [https://doi.org/10.1002/\(SICI\)1097-0061\(199904\)15:6<473::AID-YEA388>3.0.CO;2-Y](https://doi.org/10.1002/(SICI)1097-0061(199904)15:6<473::AID-YEA388>3.0.CO;2-Y)
- Benucci, I., Liburdi, K., Cerreti, M., & Esti, M. (2016). Characterization of Active Dry Wine Yeast During Starter Culture (Pied de Cuve) Preparation for Sparkling Wine Production. *Journal of Food Science*, 81(8), M2015–M2020. <https://doi.org/10.1111/1750-3841.13379>
- Blouin, J., & Peynaud, É. (2006). *Enología práctica: Conocimiento y elaboración del vino* (4^a). Mundi-Prensa.
- Borrull, A., López-Martínez, G., Miró-Abella, E., Salvadó, Z., Poblet, M., Cordero-Otero, R., & Rozès, N. (2016). New insights into the physiological state of *Saccharomyces cerevisiae* during ethanol acclimation for producing sparkling wines. *Food Microbiology*, 54, 20–29. <https://doi.org/10.1016/j.fm.2015.11.001>

- Borrull, A., Poblet, M., & Rozès, N. (2015). New insights into the capacity of commercial wine yeasts to grow on sparkling wine media. Factor screening for improving wine yeast selection. *Food Microbiology*, *48*, 41–48. <https://doi.org/10.1016/j.fm.2014.12.006>
- Capece, A., Pietrafesa, R., Siesto, G., & Romano, P. (2020). Biotechnological approach based on selected *Saccharomyces cerevisiae* starters for reducing the use of sulfur dioxide in wine. *Microorganisms*, *8*(5). <https://doi.org/10.3390/microorganisms8050738>
- Carrascosa, A. V., Martínez-Rodríguez, A., Cebollero, E., & González, R. (2011). *Saccharomyces* Yeasts II: Secondary Fermentation. *Molecular Wine Microbiology*, 33–49. <https://doi.org/10.1016/B978-0-12-375021-1.10002-5>
- Casey, G. P., & Ingledew, W. M. M. (1986). Ethanol Tolerance in Yeasts. *CRC Critical Reviews in Microbiology*, *13*(3), 219–280. <https://doi.org/10.3109/10408418609108739>
- Chandra, M., Barata, A., Ferreira-Dias, S., Malfeito-Ferreira, M., & Loureiro, V. (2014). A Response Surface Methodology study on the role of factors affecting growth and volatile phenol production by *Brettanomyces bruxellensis* ISA 2211 in wine. *Food Microbiology*, *42*, 40–46. <https://doi.org/10.1016/j.fm.2014.03.002>
- Chandra, Mahesh, Oro, I., Ferreira-Dias, S., & Malfeito-Ferreira, M. (2015). Effect of Ethanol, Sulfur Dioxide and Glucose on the Growth of Wine Spoilage Yeasts Using Response Surface Methodology. *PLOS ONE*, *10*(6), e0128702. <https://doi.org/10.1371/journal.pone.0128702>
- Chen, Z., Zhang, X., Li, H., Liu, H., Xia, Y., & Xun, L. (2018). The complete pathway for thiosulfate utilization in *Saccharomyces cerevisiae*. *Applied and Environmental Microbiology*, *84*(22). <https://doi.org/10.1128/AEM.01241-18>
- Cheraiti, N., Guezenc, S., & Salmon, J. M. (2010). Very early acetaldehyde production by industrial *Saccharomyces cerevisiae* strains: A new intrinsic character. *Applied Microbiology and Biotechnology*, *86*(2), 693–700. <https://doi.org/10.1007/s00253-009-2337-5>
- Christofi, S., Katsaros, G., Mallouchos, A., Cotea, V., & Kallithraka, S. (2021). Reducing SO₂ content in wine by combining High Pressure and glutathione addition. *OENO One*, *January*, 235–252. <https://doi.org/10.20870/oeno-one.2021.55.1.4558>
- Di Gianvito, P., Arfelli, G., Suzzi, G., & Tofalo, R. (2019). New Trends in Sparkling Wine Production: Yeast Rational Selection. In *Alcoholic Beverages*. Elsevier Inc. <https://doi.org/10.1016/b978-0-12-815269-0.00011-8>
- Dinh, T. N., Nagahisa, K., Hirasawa, T., Furusawa, C., & Shimizu, H. (2008). Adaptation of *Saccharomyces cerevisiae* cells to high ethanol concentration and changes in fatty acid composition of membrane and cell size. *PLoS ONE*, *3*(7). <https://doi.org/10.1371/journal.pone.0002623>
- Divol, B., & Lonvaud-Funel, A. (2005). Evidence for viable but nonculturable yeasts in botrytis-affected wine. *Journal of Applied Microbiology*, *99*(1), 85–93. <https://doi.org/10.1111/j.1365-2672.2005.02578.x>
- Divol, Benoit, Du Toit, M., & Duckitt, E. (2012). Surviving in the presence of sulphur dioxide: Strategies developed by wine yeasts. *Applied Microbiology and Biotechnology*, *95*(3), 601–613. <https://doi.org/10.1007/s00253-012-4186-x>
- Donalies, U. E. B., & Stahl, U. (2002). Increasing sulphite formation in *Saccharomyces cerevisiae* by overexpression of MET14 and SSU1. *Yeast*, *19*(6), 475–484. <https://doi.org/10.1002/yea.849>
- Dos Santos, A. A., Deoti, R., Müller, G., Dário, M. G., Stambuk, B. U., & Alves, S. L. (2017). Dosagem de açúcares redutores com o reativo DNS em microplaca. *Brazilian Journal of Food Technology*, *20*. <https://doi.org/10.1590/1981-6723.11315>
- Edwards, C. G., & Oswald, T. A. (2018). Interactive effects between total SO₂, ethanol and storage temperature against *Brettanomyces bruxellensis*. *Letters in Applied Microbiology*, *66*(1), 71–76. <https://doi.org/10.1111/lam.12816>
- Farrugia, G., & Balzan, R. (2012). Oxidative stress and programmed cell death in yeast. *Frontiers in Oncology*, *2* JUN(June), 1–21. <https://doi.org/10.3389/fonc.2012.00064>
- Fröhlich, K. U., & Madeo, F. (2000). Apoptosis in yeast - A monocellular organism exhibits altruistic behaviour. *FEBS Letters*, *473*(1), 6–9. [https://doi.org/10.1016/S0014-5793\(00\)01474-5](https://doi.org/10.1016/S0014-5793(00)01474-5)
- Fugelsang, K. C., & Edwards, C. G. (2007). *WINE MICROBIOLOGY - Practical Applications and Procedures* (Second edi). Springer.
- García-Ríos, E., & Guillamón, J. M. (2019). Sulfur dioxide resistance in *Saccharomyces cerevisiae*: Beyond SSU1. *Microbial Cell*, *6*(12), 509–523. <https://doi.org/10.15698/mic2019.12.699>
- García-Ríos, E., Nuévalos, M., Barrio, E., Puig, S., & Guillamón, J. M. (2019). A new chromosomal rearrangement improves the adaptation of wine yeasts to sulfite. *Environmental Microbiology*, *21*(5), 1771–1781. <https://doi.org/10.1111/1462-2920.14586>
- Giannattasio, S., Guaragnella, N., Ždravlečić, M., & Marra, E. (2013). Molecular mechanisms of *Saccharomyces cerevisiae* stress adaptation and programmed cell death in response to acetic acid. *Frontiers in Microbiology*, *4*(FEB), 1–7. <https://doi.org/10.3389/fmicb.2013.00033>
- Gould, G. W., & Russell, N. J. (2003). Sulfite. In *Food Preservatives* (pp. 85–101). Springer US. https://doi.org/10.1007/978-0-387-30042-9_5

- Hinze, H., & Holzer, H. (1986). Analysis of the energy metabolism after incubation of *Saccharomyces cerevisiae* with sulfite or nitrite. *Archives of Microbiology*, 145(1), 27–31. <https://doi.org/10.1007/BF00413023>
- Huffer, S., Clark, M. E., Ning, J. C., Blanch, H. W., & Clark, D. S. (2011). Role of alcohols in growth, lipid composition, and membrane fluidity of yeasts, bacteria, and archaea. *Applied and Environmental Microbiology*, 77(18), 6400–6408. <https://doi.org/10.1128/AEM.00694-11>
- Jennings, M. L., & Cui, J. (2012). Inactivation of *Saccharomyces cerevisiae* sulfate transporter Sul2p: Use it and lose it. *Biophysical Journal*, 102(4), 768–776. <https://doi.org/10.1016/j.bpj.2012.01.005>
- Jones, R. P., & Greenfield, P. F. (1987). Ethanol and the fluidity of the yeast plasma membrane. *Yeast*, 3(4), 223–232. <https://doi.org/10.1002/yea.320030403>
- Kalyanaraman, B., Darley-USmar, V., Davies, K. J. A., Dennery, P. A., Forman, H. J., Grisham, M. B., Mann, G. E., Moore, K., Roberts, L. J., and Ischiropoulos, H. (2012). Measuring reactive oxygen and nitrogen species with fluorescent probes: Challenges and limitations. *Free Radical Biology and Medicine*, 52(1), 1–6. <https://doi.org/10.1016/j.freeradbiomed.2011.09.030>
- Kankipati, H. N., Rubio-Teixeira, M., Castermans, D., Diallinas, G., & Thevelein, J. M. (2015). Sul1 and Sul2 sulfate transceptors signal to protein kinase A upon exit of sulfur starvation. *Journal of Biological Chemistry*, 290(16), 10430–10446. <https://doi.org/10.1074/jbc.M114.629022>
- Kemp, B., Plante, J., & L. Inglis, D. (2020). Nutrient Addition to Low pH Base Wines (L. cv. Riesling) during Yeast Acclimatization for Sparkling Wine: Its Influence on Yeast Cell Growth, Sugar Consumption and Nitrogen Usage. *Beverages*, 6(1), 10. <https://doi.org/10.3390/beverages6010010>
- Kubota, S., Takeo, I., Kume, K., Kanai, M., Shitamukai, A., Mizunuma, M., Miyakawa, T., Shimoji, H., Iefuji, H., & Hirata, D. (2004). Effect of ethanol on cell growth of budding yeast: Genes that are important for cell growth in the presence of ethanol. *Bioscience, Biotechnology and Biochemistry*, 68(4), 968–972. <https://doi.org/10.1271/bbb.68.968>
- Labuschagne, P., & Divol, B. (2021). Thiamine: a key nutrient for yeasts during wine alcoholic fermentation. *Applied Microbiology and Biotechnology*, 105(3), 953–973. <https://doi.org/10.1007/s00253-020-11080-2>
- Lage, P., Sampaio-Marques, B., Ludovico, P., Mira, N. P., & Mendes-Ferreira, A. (2019). Transcriptomic and chemogenomic analyses unveil the essential role of com2-regulon in response and tolerance of *Saccharomyces cerevisiae* to stress induced by sulfur dioxide. *Microbial Cell*, 6(11), 509–523. <https://doi.org/10.15698/mic2019.11.697>
- Leif, R. C. (1986). Practical flow cytometry, by Howard M. Shapiro. In *Cytometry* (Vol. 7, Issue 1, pp. 111–112). <https://doi.org/10.1002/cyto.990070119>
- Li, E., & Mira de Orduña Heidinger, R. (2020). Acetaldehyde metabolism in industrial strains of *Saccharomyces cerevisiae* inhibited by SO₂ and cooling during alcoholic fermentation. *OENO One*, 54(2), 351–358. <https://doi.org/10.20870/oeno-one.2020.54.2.2391>
- Li, E., & Mira de Orduña, R. (2017). Acetaldehyde kinetics of enological yeast during alcoholic fermentation in grape must. *Journal of Industrial Microbiology and Biotechnology*, 44(2), 229–236. <https://doi.org/10.1007/s10295-016-1879-7>
- Lin, M. M. H., Boss, P. K., Walker, M. E., Sumbly, K. M., Grbin, P. R., & Jiranek, V. (2020). Evaluation of indigenous non-*Saccharomyces* yeasts isolated from a South Australian vineyard for their potential as wine starter cultures. *International Journal of Food Microbiology*, 312(September 2019), 108373. <https://doi.org/10.1016/j.ijfoodmicro.2019.108373>
- Lisanti, M. T., Blaiotta, G., Nioi, C., & Moio, L. (2019). Alternative Methods to SO₂ for Microbiological Stabilization of Wine. *Comprehensive Reviews in Food Science and Food Safety*, 18(2), 455–479. <https://doi.org/10.1111/1541-4337.12422>
- Liu, S. Q., & Pilone, G. J. (2000). An overview of formation and roles of acetaldehyde in winemaking with emphasis on microbiological implications. *International Journal of Food Science and Technology*, 35(1), 49–61. <https://doi.org/10.1046/j.1365-2621.2000.00341.x>
- Livak, K. J., & Schmittgen, T. D. (2001). Analysis of relative gene expression data using real-time quantitative PCR and the 2- $\Delta\Delta$ CT method. *Methods*, 25(4), 402–408. <https://doi.org/10.1006/meth.2001.1262>
- Madeira, A., Leitão, L., Soveral, G., Dias, P., Prista, C., Moura, T., & Loureiro-Dias, M. C. (2010). Effect of ethanol on fluxes of water and protons across the plasma membrane of *Saccharomyces cerevisiae*. *FEMS Yeast Research*, 10(3), 252–258. <https://doi.org/10.1111/j.1567-1364.2010.00607.x>
- Maier, K., Hinze, H., & Leuschel, L. (1986). Mechanism of sulfite action on the energy metabolism of *Saccharomyces cerevisiae*. *BBA - Bioenergetics*, 848(1), 120–130. [https://doi.org/10.1016/0005-2728\(86\)90167-2](https://doi.org/10.1016/0005-2728(86)90167-2)
- Marchante, L., Loarce, L., Izquierdo-Cañas, P. M., Alañón, M. E., García-Romero, E., Pérez-Coello, M. S., & Díaz-Maroto, M. C. (2019). Natural extracts from grape seed and stem by-products in combination with colloidal silver as alternative preservatives to SO₂ for white wines: Effects on chemical composition and sensorial properties. *Food Research International*, 125(July), 108594. <https://doi.org/10.1016/j.foodres.2019.108594>

- Martí-Raga, M., Marullo, P., Beltran, G., & Mas, A. (2016). Nitrogen modulation of yeast fitness and viability during sparkling wine production. *Food Microbiology*, *54*, 106–114. <https://doi.org/10.1016/j.fm.2015.10.009>
- Martí-Raga, M., Sancho, M., Guillamón, J. M., Mas, A., & Beltran, G. (2015). The effect of nitrogen addition on the fermentative performance during sparkling wine production. *Food Research International*, *67*, 126–135. <https://doi.org/10.1016/j.foodres.2014.10.033>
- Marullo, P., Claisse, O., Raymond Eder, M. L., Börlin, M., Feghali, N., Bernard, M., Legras, J. L., Albertin, W., Rosa, A. L., & Masneuf-Pomarede, I. (2020). SSU1 Checkup, a Rapid Tool for Detecting Chromosomal Rearrangements Related to the SSU1 Promoter in *Saccharomyces cerevisiae*: An Ecological and Technological Study on Wine Yeast. *Frontiers in Microbiology*, *11*(June), 1–14. <https://doi.org/10.3389/fmicb.2020.01331>
- McGahan, A. J., Martin, S. J., Bissonnette, R. P., Mahboubi, A., Shi, Y., Mogil, R. J., Nishioka, W. K., & Green, D. R. (1995). The End of the (Cell) Line: Methods for the Study of Apoptosis in Vitro. *Methods in Cell Biology*, *46*(C), 153–174. [https://doi.org/10.1016/S0091-679X\(08\)61929-9](https://doi.org/10.1016/S0091-679X(08)61929-9)
- Nadai, C., Treu, L., Campanaro, S., Giacomini, A., & Corich, V. (2016). Different mechanisms of resistance modulate sulfite tolerance in wine yeasts. *Applied Microbiology and Biotechnology*, *100*(2), 797–813. <https://doi.org/10.1007/s00253-015-7169-x>
- Nardi, T., Corich, V., Giacomini, A., & Blondin, B. (2010a). A sulphite-inducible form of the sulphite efflux gene SSU1 in a *Saccharomyces cerevisiae* wine yeast. *Microbiology*, *156*(6), 1686–1696. <https://doi.org/10.1099/mic.0.036723-0>
- Nardi, T., Remize, F., & Alexandre, H. (2010b). Adaptation of yeasts *Saccharomyces cerevisiae* and *Brettanomyces bruxellensis* to winemaking conditions: A comparative study of stress genes expression. *Applied Microbiology and Biotechnology*, *88*(4), 925–937. <https://doi.org/10.1007/s00253-010-2786-x>
- Navarro-Tapia, E., Querol, A., & Pérez-Torrado, R. (2018). Membrane fluidification by ethanol stress activates unfolded protein response in yeasts. *Microbial Biotechnology*, *11*(3), 465–475. <https://doi.org/10.1111/1751-7915.13032>
- Noble, J. J., Sanchez, I. I., & Blondin, B. B. (2015). Identification of new *Saccharomyces cerevisiae* variants of the MET2 and SKP2 genes controlling the sulfur assimilation pathway and the production of undesirable sulfur compounds during alcoholic fermentation. *Microbial Cell Factories*, *14*(1), 1–16. <https://doi.org/10.1186/s12934-015-0245-1>
- Novo, M., Bigey, F., Beyne, E., Galeote, V., Gavory, F., Mallet, S., Cambon, B., Legras, J.-L., Wincker, P., Casaregola, S., & Dequin, S. (2009). Eukaryote-to-eukaryote gene transfer events revealed by the genome sequence of the wine yeast *Saccharomyces cerevisiae* EC1118. *Proceedings of the National Academy of Sciences*, *106*(38), 16333–16338. <https://doi.org/10.1073/pnas.0904673106>
- Ochando, T., Mouret, J. R., Humbert-Goffard, A., Agüera, E., Sablayrolles, J. M., & Farines, V. (2020). Comprehensive study of the dynamic interaction between SO₂ and acetaldehyde during alcoholic fermentation. *Food Research International*, *136*(February), 109607. <https://doi.org/10.1016/j.foodres.2020.109607>
- OIV (2009). Acetaldehyde - Method OIV-MA-AS315-01. In *Compendium of international methods of analysis*.
- Park, H., & Bakalinsky, A. T. (2000). SSU1 mediates sulphite efflux in *Saccharomyces cerevisiae*. *Yeast*, *16*(10), 881–888. [https://doi.org/10.1002/1097-0061\(200007\)16:10<881::aid-yea576>3.3.co;2-v](https://doi.org/10.1002/1097-0061(200007)16:10<881::aid-yea576>3.3.co;2-v)
- Park, H., & Hwang, Y. S. (2008). Genome-wide transcriptional responses to sulfite in *Saccharomyces cerevisiae*. *Journal of Microbiology*, *46*(5), 542–548. <https://doi.org/10.1007/s12275-008-0053-y>
- Penacho, V., Valero, E., & Gonzalez, R. (2012). Transcription profiling of sparkling wine second fermentation. *International Journal of Food Microbiology*, *153*(1–2), 176–182. <https://doi.org/10.1016/j.ijfoodmicro.2011.11.005>
- Pilkington, B. J., & Rose, A. H. (1988). Reactions of *Saccharomyces cerevisiae* and *Zygosaccharomyces bailii* to sulphite. *Journal of General Microbiology*, *134*(10), 2823–2830. <https://doi.org/10.1099/00221287-134-10-2823>
- Porrás-Agüera, J. A., Román-Camacho, J. J., Moreno-García, J., Mauricio, J. C., Moreno, J., & García-Martínez, T. (2020). Effect of endogenous CO₂ overpressure on the yeast “stressome” during the “prise de mousse” of sparkling wine. *Food Microbiology*, *89*(May 2019), 103431. <https://doi.org/10.1016/j.fm.2020.103431>
- Rankine, B. C., & Pocock, K. F. (1969). Influence of yeast strain on binding of sulphur dioxide in wines, and on its formation during fermentation. *Journal of the Science of Food and Agriculture*, *20*(2), 104–109. <https://doi.org/10.1002/jsfa.2740200210>
- Ribéreau-Gayon, P., Glories, Y., Maujean, A., & Dubourdieu, D. (2006). The microbiology of wine and vinifications. Handbook of Enology, volume 1, 2nd ed. John Wiley and Sons, Ltd, West Sussex, England. In *Handbook of Enology* (Vol. 1). <https://doi.org/10.1002/0470010398>
- Salma, M., Rousseaux, S., Sequeira-Le Grand, A., Divol, B., & Alexandre, H. (2013). Characterization of the Viable but Nonculturable (VBNC) State in *Saccharomyces cerevisiae*. *PloS One*, *8*(10), 2–12. <https://doi.org/10.1371/journal.pone.0077600>
- Schimz, K. L., & Holzer, H. (1979). Rapid decrease of ATP content in intact cells of *Saccharomyces cerevisiae*

after incubation with low concentrations of sulfite. *Archives of Microbiology*, 121(3), 225–229. <https://doi.org/10.1007/BF00425059>

Shedlovskiy, D., Shcherbik, N., & Pestov, D. G. (2017). One-step hot formamide extraction of RNA from *Saccharomyces cerevisiae*. *RNA Biology*, 14(12), 1722–1726. <https://doi.org/10.1080/15476286.2017.1345417>

Shih, M. K., Lai, Y. H., Lin, C. M., Chen, Y. W., Hou, Z. T., & Hou, C. Y. (2020). A novel application of terpene compound α -pinene for alternative use of sulfur dioxide-free white wine. *International Journal of Food Properties*, 23(1), 520–532. <https://doi.org/10.1080/10942912.2020.1742735>

Silva, M., Gama, J., Pinto, N., Pivi, G., Brancal, H., Carvalho, L., Loureiro, V., & Pato, M. V. (2019). Sulfite concentration and the occurrence of headache in young adults: a prospective study. *European Journal of Clinical Nutrition*, 73(9), 1316–1322. <https://doi.org/10.1038/s41430-019-0420-2>

Simonin, S., Roullier-Gall, C., Ballester, J., Schmitt-Kopplin, P., Quintanilla-Casas, B., Vichi, S., Peyron, D., Alexandre, H., & Tourdot-Maréchal, R. (2020). Bio-Protection as an Alternative to Sulphites: Impact on Chemical and Microbial Characteristics of Red Wines. *Frontiers in Microbiology*, 11(June), 1–14. <https://doi.org/10.3389/fmicb.2020.01308>

Sudraud, P., Chauvet, S., Cazabeil, J.-M., Bart, M., Crebassa, B., & Rognon, G. (1985). Activité antilevure de l'anhydride sulfureux moléculaire.

OENO One, 19(1), 31. <https://doi.org/10.20870/oeno-one.1985.19.1.1316>

Togores, J. H. (2018). *Tratado de Enología. Volumen I y II* (I. H. Úbeda (ed.); 3.^a ed.). Mundi-Prensa.

Vally, H., Misso, N. L. A., & Madan, V. (2009). Clinical effects of sulphite additives. *Clinical and Experimental Allergy*, 39(11), 1643–1651. <https://doi.org/10.1111/j.1365-2222.2009.03362.x>

Waterhouse, A. L., Sacks, G. L., & Jeffery, D. W. (2016). *Understanding Wine Chemistry* (first edit). Wiley.

Wloch-Salamon, D. M., & Bem, A. E. (2013). Types of cell death and methods of their detection in yeast *Saccharomyces cerevisiae*. *Journal of Applied Microbiology*, 114(2), 287–298. <https://doi.org/10.1111/jam.12024>

Zara, G., & Nardi, T. (2021). Yeast Metabolism and Its Exploitation in Emerging Winemaking Trends: From Sulfite Tolerance to Sulfite Reduction. *Fermentation*, 7(2), 57. <https://doi.org/10.3390/fermentation7020057>

Zimmer, A., Durand, C., Loira, N., Durrens, P., Sherman, D. J., & Marullo, P. (2014). QTL dissection of lag phase in wine fermentation reveals a new translocation responsible for *Saccharomyces cerevisiae* adaptation to sulfite. *PLoS ONE*, 9(1), 37–39. <https://doi.org/10.1371/journal.pone.0086298>

Zoecklein, B. W., Fugelsang, K. C., Gump, B. H., & Nury, F. S. (1999). *Wine Analysis and Production*. Springer US. <https://doi.org/10.1007/978-1-4757-6967-8>.



This article is published under the **Creative Commons licence** (CC BY 4.0).

Use of all or part of the content of this article must mention the authors, the year of publication, the title, the name of the journal, the volume, the pages and the DOI in compliance with the information given above.